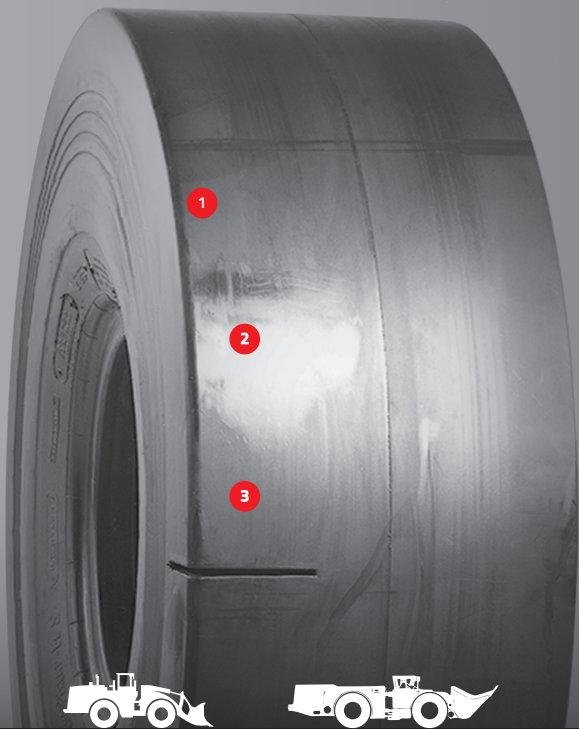


BRIDGESTONE

STMS

SMOOTH
TREAD MS

L-5S, INDUSTRIAL SERVICE IND-5S



The Smooth Tread-MS (STMS) bias tire is specially designed for severe rocky surfaces, such as underground mines, open pits, quarry and some port applications.

At Ports is used for reach stacker, top picks, and other container handling equipment, especially on abrasive concrete surfaces.



LOADERS

LHDs

CONTAINER HANDLERS (EMPTY)

STRADDLE CARRIERS

SPECIALIZED FEATURES

- 1 SMOOTH EXTRA DEEP TREAD PATTERN**
For extended tire life and exceptional cut resistance and impact protection
- 2 EXTRA-DEEP & SPECIALLY COMPOUNDED RUBBER**
Provides maximum resistance to wearing, heat and cutting
- 3 ALSO USED FOR CONTAINER HANDLER AND /OR PORT APPLICATIONS**
Provides best riding comfort especially on abrasive concrete surfaces



BRIDGESTONE COMMERCIAL

See your Bridgestone representative for more information.

BS125 - V24 ©Bridgestone Americas Tire Operations LLC. All Rights Reserved.

BRIDGESTONE

Firestone

STMS

SMOOTH
TREAD MS

L-5S, INDUSTRIAL SERVICE IND-5S

CATEGORY	SIZE	PLY/STAR RATING	COMPOUND/ CONSTRUCTION	TRA	ARTICLE #	AVG. WT. [□] [LBS]	OTD [□] [32"]	OVERALL DIAMETER [□] [IN]	OVERALL WIDTH [□] [IN]
SMALL TUBE TYPE	12.00-24	20	D2A	L-5S	295256	350	69	50.2	12.6
	14.00-24	20	D2A	L-5S	263303	534	98	54.1	14.4
SMALL TUBELESS	17.5-25	20	D2A	L-5S	261289	627	87	54.5	17.7
	18.00-25	32	D2A	L-5S	420972	1,092	106	65.9	20.5
	18.00-25	40	IDU	Industrial Service	422231	1,083	106	65.9	20.5
	26.5-25	32	D2A	L-5S	275573	1,869	120	70.8	26.8
	26.5-25	36	D2A	L-5S	421863	1,904	120	70.8	26.8
LARGE TUBELESS	29.5-29	34	D2A	L-5S	419095	2,384	130	79.6	29.5
	35/65-33	42	D2V	L-5S	424874	3,298	122	81.7	35.3
	45/65-45	58	D2V	L-5S	422657	6,681	146	107.5	45.1

[□] Actual specifications may vary depending on the tire produced. Off-road tire limited warranty information is available from your Bridgestone representative or dealer.

BRIDGESTONE COMMERCIAL

See your Bridgestone representative for more information.

BS125 - V24 ©Bridgestone Americas Tire Operations LLC. All Rights Reserved.

"Best-in-Class Service" is based on the largest number of dealers in the commercial tire dealer network in U.S. found on www.commercial.bridgestone.com. As compared to the 2022 U.S. Replacement and Retreaded Medium/Heavy Truck Tire Brands with similar market share as listed in the January 2023 Modern Tire Dealer (page 34).

