

BRIDGESTONE

RLS

R-LUG S

E-4, L-4, INDUSTRIAL SERVICE IND-4



The R-Lug S (RLS) bias tire is specially designed for longer tread life, thanks to extra-deep tread. The unique rubber compound resists cutting and wearing on smooth surface.

Suitable each stackers, top picks, and other container handling equipment.



RIGID HAUL TRUCKS

LOADERS

CONTAINER HANDLERS

SPECIALIZED FEATURES

1 DEEP NON-DIRECTIONAL TREAD PATTERN

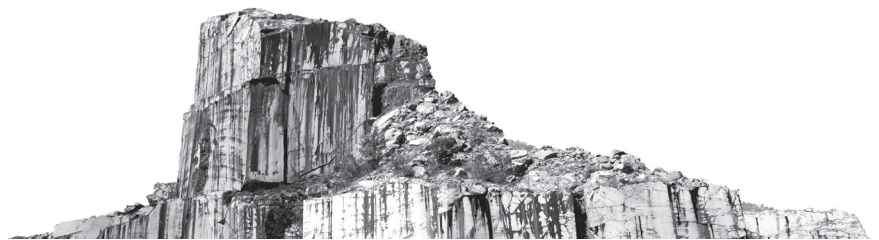
For outstanding wear resistance and tread life

2 SPECIAL COMPOUNDS

To resist heat and cutting

3 DESIGNED FOR OPERATING ON ROCK, COAL & EARTH SURFACES - LOADERS & EARTHMOVERS

Where serviceability and tread cutting are problems



BRIDGESTONE COMMERCIAL

See your Bridgestone representative for more information.

BS125 - V24 ©Bridgestone Americas Tire Operations LLC. All Rights Reserved.

BRIDGESTONE

Firestone

CATEGORY	SIZE	PLY/STAR RATING	COMPOUND/ CONSTRUCTION	TRA	ARTICLE #	AVG. WT. [□] [LBS]	OTD [□] [32"]	OVERALL DIAMETER [□] [IN]	OVERALL WIDTH [□] [IN]
SMALL TUBELESS	16.00-25	28	IDU	Industrial Service	15843	615	72	60.9	17.2
	16.00-25	32	IDU	Industrial Service	15844	615	72	60.9	17.2
	26.5-25	26	D2A	L-4	3551	1,068	84	70.3	27.8
	29.5-25	28	D2A	L-4	275328	1,432	93	75.3	30.9
LARGE TUBELESS	24.00-35	42	E2A	E-4	276057	1,640	83	86.6	25.8

[□] Actual specifications may vary depending on the tire produced. Off-road tire limited warranty information is available from your Bridgestone representative or dealer.

BRIDGESTONE COMMERCIAL

See your Bridgestone representative for more information.

BS125 - V24 ©Bridgestone Americas Tire Operations LLC. All Rights Reserved. "Best-In-Class Service" is based on the largest number of dealers in the commercial tire dealer network in U.S. found on www.commercial.bridgestone.com. As compared to the 2022 U.S. Replacement and Retreaded Medium/Heavy Truck Tire Brands with similar market share as listed in the January 2023 Modern Tire Dealer (page 34).

